

Federated International Strategic Value Dividend Fund

4Q
2019

12/31/19

Fund Facts

Performance Inception Date

6/4/08

Benchmark

MSCI World ex-U.S. High Dividend Yield Index

Morningstar Category

Foreign Large Value

Lipper Classification

International Equity Income Funds

Fund Assets

439.8 million

Ticker Symbols

R6 Shares - IVFLX
Institutional Shares - IVFIX
A Shares - IVFAX
C Shares - IVFCX

Key Investment Team

Daniel Peris, Ph.D., CFA
Deborah Bickerstaff
Jared Hoff
Michael Tucker

Yields (%)

30-Day Yield (R6)	3.91
30-Day Yield (IS)	3.90
30-Day Yield (A)	3.45
12-Month Yield (R6)	3.99
12-Month Yield (IS)	3.98
12-Month Yield (A)	3.75

Fund Description

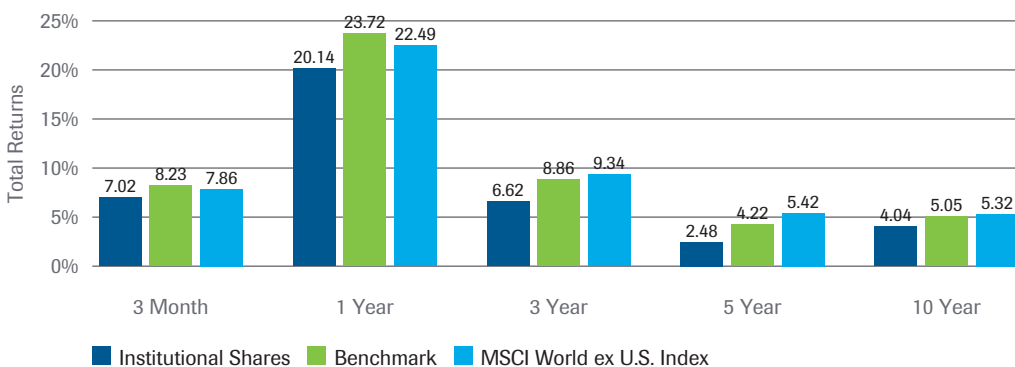
The fund pursues income and long-term capital appreciation by investing primarily in companies based outside the U.S., with a focus on high-dividend-paying stocks with dividend growth potential. It seeks to provide a substantially higher yield than the broad international market.

Performance

Average Annual Total Returns (%)

Performance shown is before tax.

	3 Month	YTD	1 Year	3 Year	5 Year	10 Year	Since Inception	Expense Ratio*	
								Before Waivers	After Waivers
R6 Shares	7.02	20.54	20.54	6.63	2.44	3.51	-2.36	0.93	0.85
Institutional Shares	7.02	20.14	20.14	6.62	2.48	4.04	1.39	1.00	0.86
A Shares (NAV)	6.96	20.23	20.23	6.36	2.24	3.81	1.17	1.29	1.11
A Shares (MOP)	1.08	13.75	13.75	4.37	1.09	3.21	0.68	1.29	1.11
Benchmark	8.23	23.72	23.72	8.86	4.22	5.05	-	-	-



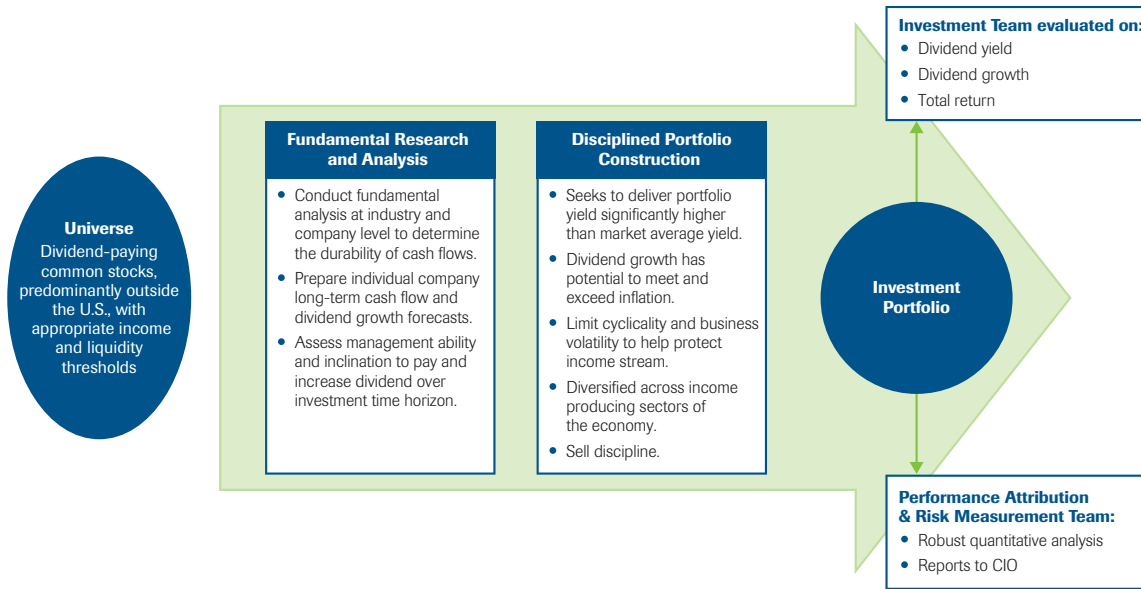
Calendar Year Returns (%)

	2019	2018	2017	2016	2015	2014	2013	2012	2011	2010
Institutional Shares	20.14	-11.99	14.63	0.94	-7.60	-2.84	12.80	13.05	2.98	3.06
Benchmark	23.72	-13.04	19.90	5.70	-9.80	-2.85	22.43	12.47	-1.50	0.99
MSCI World ex U.S. Index	22.49	-14.09	24.21	2.75	-0.81	-4.90	22.78	17.32	-12.14	7.75
Morningstar Category Average	17.80	-15.44	22.08	3.34	-3.10	-6.32	21.00	16.21	-12.93	7.48

Performance quoted represents past performance, which is no guarantee of future results. Investment return and principal value will fluctuate so that an investor's shares, when redeemed, may be worth more or less than their original cost. Current performance may be lower or higher than what is stated. To view performance current to the most recent month-end, and for after-tax returns, contact us or visit FederatedInvestors.com. Maximum Offering Price figures reflect the maximum sales charge of 5.5% for A Shares. See the prospectus for other fees and expenses that apply to a continued investment in the fund.

* The fund's expense ratio is from the most recent prospectus. The expense ratio may reflect voluntary fee waivers and/or expense reimbursements determined by the fund's Advisor and its affiliates. The voluntary waivers and/or reimbursements, if applicable, are in effect up to but not including the later of 2/1/20 or the date of the fund's next effective prospectus.

Investment Process



Portfolio Statistics

Weighted Median P/E (NTM)	15.4x
Median 3 Year Average Payout Ratio	74.80
Weighted Average EPS Growth Next 5 Years	6.29
Weighted Median Market Cap	\$49.6 b
Weighted Median Price/Book	1.8x
Number of Securities	39
% of Emerging Markets	1.23%

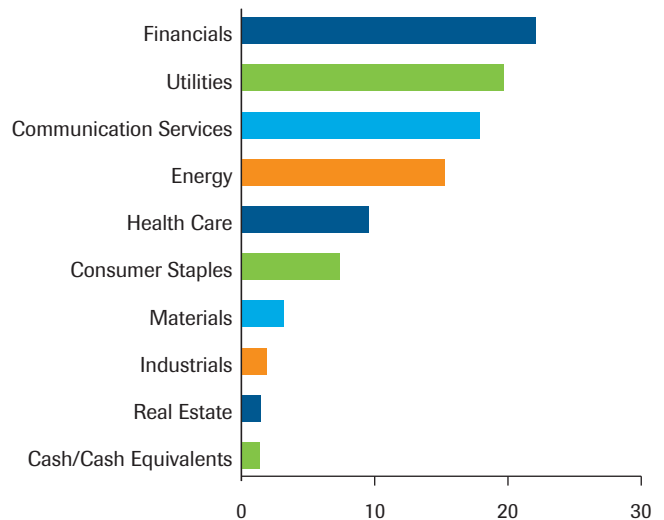
Top Holdings (%)

Enbridge Inc.	4.9
Sanofi	4.7
BCE Inc.	4.4
National Grid plc	4.4
Canadian Imperial Bank of Commerce	3.7
Zurich Insurance Group Ltd	3.7
BP PLC	3.6
SSE PLC	3.6
TC Energy Corp.	3.6
Telus Corp.	3.4

Country Weightings (%)

United Kingdom	28.0	Finland	2.2
Canada	24.0	Hong Kong	1.8
France	10.8	Spain	1.4
Germany	6.8	Norway	1.3
Italy	6.1	Brazil	1.2
United States	5.1	Singapore	0.9
Switzerland	4.7	Cash/Cash Equivalents	1.4
Japan	4.3		

Sector Weightings (%)



Portfolio composition is based on net assets at the close of business on 12/31/19 and may not necessarily reflect adjustments that are routinely made when presenting net assets for formal financial statement purposes. Because this is a managed portfolio, the investment mix will change.

Highlights

- Federated International Strategic Value Dividend Fund provided a gross weighted average dividend yield of 4.85% and a 30-day SEC yield of 3.45% (A shares at MOP) at quarter end
- This was well ahead of the 3.16% weighted average yield provided by the MSCI World ex-U.S. Index and slightly trailing the 4.92% yield provided by the fund's benchmark, the MSCI World ex-U.S. High Dividend Yield Index
- For the quarter, 9 portfolio holdings raised their dividends
- For the rolling one-year period, 37 companies raised their dividends, accounting for 39 increases overall, one reduction and one special dividend
- The fund's return slightly lagged that of the broad market in the fourth quarter of 2019, as investors preferred to own lower-yielding, cyclical equities

Looking Back

Global equity prices rallied in during the quarter, led by positive sentiment towards the U.S.-China trade talks, better Brexit news and slightly higher PMIs in some major economies. The U.S. led global equity market performance as the S&P 500 gained 9.07% while the MSCI World ex-U.S. index returned 7.86%. Within the broad international market index, returns across the GICS sectors were tilted towards a risk-on environment, with Information Technology, Health Care, Materials and Industrials leading the market higher while Consumer Staples, Real Estate and Communication Services lagged during the quarter. As further evidence of investors' risk-on posture in the quarter, the lowest-beta quintile of the broadly based MSCI World ex-U.S. Index underperformed the highest-beta quintile by 9.63%. Large-cap equities (highest quintile) underperformed small-cap equities (smallest quintile) by 1.02%. And the highest-yielding equity quintile also underperformed the lowest-yielding quintile by 2.22% for the quarter.

Performance

Federated International Strategic Value Dividend Fund generated a total return of 6.96% (A Shares at NAV) in the fourth quarter of 2019. This compares to a return of 8.23% for the fund's benchmark, the MSCI World ex-U.S. High Dividend Yield Index, and a 7.86% return for the broad-based MSCI World ex-U.S. Index. With the fund's investments in the dividend-income-producing segment of the international market, and its 3-year beta versus the MSCI World ex-U.S. Index of 0.78, the strategy's short-term returns are not expected to move in line with the broad market.

Performance Contributors

- From a country perspective, the United Kingdom (28.00% ending weight) delivered the portfolio's largest contribution to total returns in the quarter with a weighted average return of 10.33%
- The Financials sector (22.27% ending weight), delivered the fund's highest sector contribution to total returns during the quarter, with a weighted average return of 9.15
- The fund's Health Care investments (9.60% ending weight) were also a positive contributor during the quarter

Performance Detractors

- Hong Kong (1.85% ending weight) generated a weighted average return of -11.20% in the quarter, driven by the fund's sole investment in the country, HKT Trust, as the shares lagged due to recent unrest in Hong Kong from government protests
- Other notable detractors included Telenor, Danone, and Fortis

Performance quoted represents past performance, which is no guarantee of future results. Investment return and principal value will fluctuate so that an investor's shares, when redeemed, may be worth more or less than their original cost. Current performance may be lower or higher than what is stated. To view performance current to the most recent month-end, and for after-tax returns, contact us or visit FederatedInvestors.com.

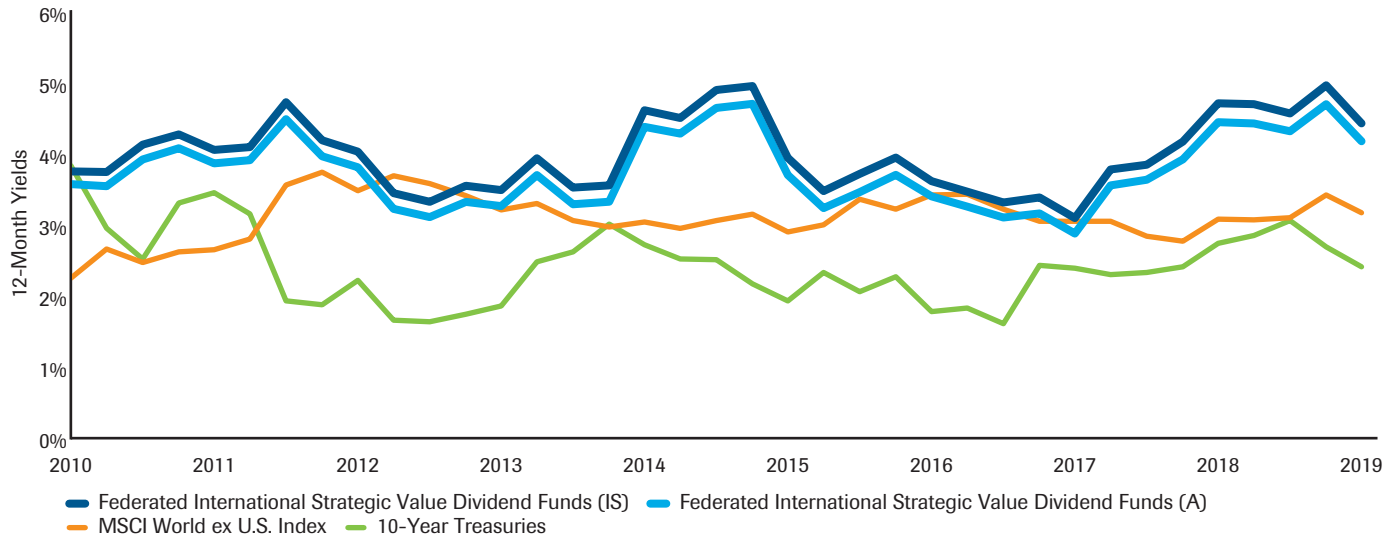
How We Are Positioned

Looking forward, while the fund's holdings are expected to continue to announce organic dividend increases in their local currencies that are consistent with the strategy's dividend growth mandate, fluctuations in foreign exchange rates can impact the portfolio's overall dividend growth outlook in 2020.

While macroeconomic data points can impact share price movements in the near term, Federated International Strategic Value Dividend Fund remains committed to its focus on long-term drivers of total return: Dividend yield and dividend growth. To pursue those goals, the fund remains concentrated in Consumer Staples, Integrated Energy, Health Care Pharmaceuticals, Telecom Services, Utilities and high-quality Banks and Insurers. These segments of the economy contain the type of high-quality, dividend-friendly stocks that the portfolio seeks out, enabling the fund to provide investors with the opportunity for a high dividend yield complemented with dividend growth. That dividend growth can help the portfolio both sustain its high yield and outpace inflation. Such investments also tend to be less volatile than the broad market, offering lower downside risk characteristics for the portfolio.

See disclosure section for important disclosures and definitions.

The Fund Delivered Higher Yield



Source: Federated Investors
 Yields for other classes will vary.
 * As of 12/31/19

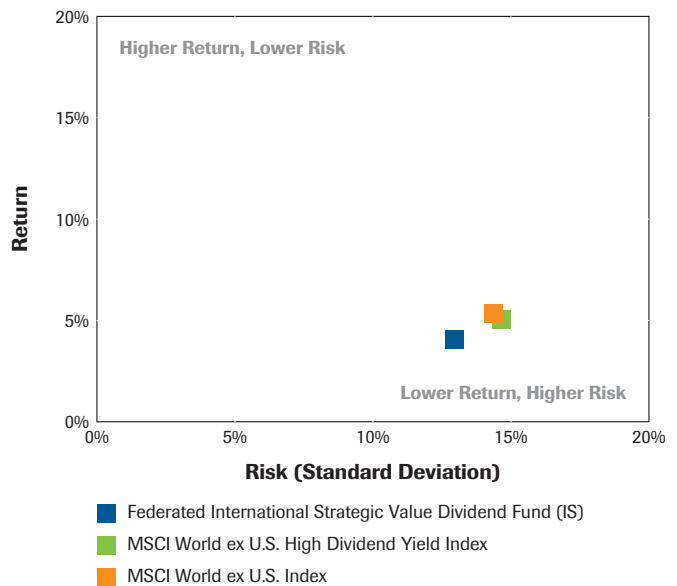
Risk Statistics

	3 Year	5 Year	7 Year	10 Year
Standard Deviation	10.10	10.65	11.17	12.97
Beta	0.81	0.77	0.83	0.84
Correlation	0.90	0.88	0.91	0.95
Up Capture Ratio	79.23	75.15	79.78	81.59
Down Capture Ratio	82.48	79.97	88.74	82.47

Sources: Federated Investors, Morningstar, Inc.
 Fund vs. MSCI World ex U.S. Index

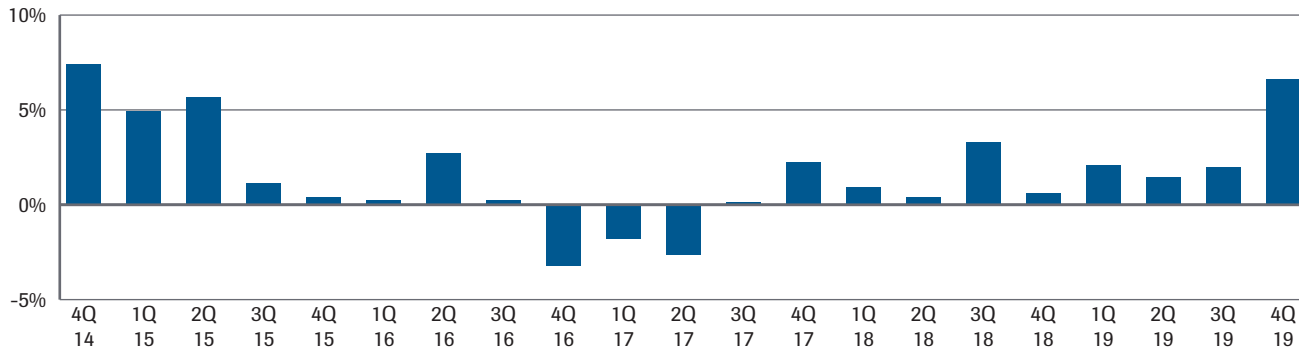
See disclosure section for important definitions.

10-Year Risk/Return



Performance quoted represents past performance, which is no guarantee of future results. Investment return and principal value will fluctuate so that an investor's shares, when redeemed, may be worth more or less than their original cost. Current performance may be lower or higher than what is stated. To view performance current to the most recent month-end, and for after-tax returns, contact us or visit FederatedInvestors.com.

3-Year Rolling Returns (IS)



Performance quoted represents past performance, which is no guarantee of future results. Investment return and principal value will fluctuate so that an investor's shares, when redeemed, may be worth more or less than their original cost. Current performance may be lower or higher than what is stated. To view performance current to the most recent month-end, and for after-tax returns, contact us or visit FederatedInvestors.com.

Category Rankings

Morningstar Foreign Large Value Category

R6 Shares	1 Year	3 Year	5 Year	10 Year
Morningstar Category % Rank	20	61	86	59
Morningstar Category Rank	61 of 346 Funds	-	-	-
IS Shares	1 Year	3 Year	5 Year	10 Year
Morningstar Category % Rank	24	61	86	59
Morningstar Category Rank	75 of 346 Funds	152 of 304 Funds	195 of 253 Funds	79 of 165 Funds
A Shares	1 Year	3 Year	5 Year	10 Year
Morningstar Category % Rank	22	68	88	68
Morningstar Category Rank	71 of 346 Funds	172 of 304 Funds	205 of 253 Funds	94 of 165 Funds

Lipper International Equity Income Funds

R6 Shares	1 Year	3 Year	5 Year	10 Year
Lipper Classification % Rank	40	-	-	-
Lipper Classification Rank	38 of 94 Funds	-	-	-
IS Shares	1 Year	3 Year	5 Year	10 Year
Lipper Classification % Rank	48	78	86	63
Lipper Classification Rank	45 of 94 Funds	67 of 85 Funds	57 of 66 Funds	23 of 36 Funds
A Shares	1 Year	3 Year	5 Year	10 Year
Lipper Classification % Rank	45	82	90	68
Lipper Classification Rank	42 of 94 Funds	70 of 85 Funds	60 of 66 Funds	25 of 36 Funds

Past performance is no guarantee of future results. Rankings are based on total return and do not take sales charges into account.

30-day yield (also known as “SEC yield”) is a compounded and annualized figure calculated according to a formula set by the SEC. The formula requires use of a specific methodology for calculating dividends and interest earned, and expenses accrued, during the period, and reflects the maximum offering price per fund share. The standardized computation is designed to facilitate yield comparisons among different funds. In the absence of temporary expense waivers or reimbursements, the 30-day yield would have been 3.75% for R6 Shares, 3.74% for Institutional Shares, and 3.27% for A Shares.

The 12-month yield is the sum of a fund’s total trailing 12-month interest and dividend payments divided by the last month’s ending share price (NAV) plus any capital gains distributed over the same period.

The fund’s R6 Shares commenced operations on January 27, 2017. For the period prior to the commencement of operations of the R6 Shares, the performance information shown is for Institutional Shares, adjusted to remove any voluntary waiver of fund expenses related to the fund’s Institutional Shares that occurred during the period prior to the commencement of operations of the fund’s R6 Shares.

A Word About Risk

Mutual funds are subject to risks and fluctuate in value.

There are no guarantees that dividend-paying stocks will continue to pay dividends. In addition, dividend-paying stocks may not experience the same capital appreciation potential as non-dividend-paying stocks.

Because the fund may allocate relatively more assets to certain industry sectors than others, the fund’s performance may be more susceptible to any developments which affect those sectors emphasized by the fund. International investing involves special risks, including currency risk, increased volatility, political risks, and differences in auditing and other financial standards.

Definitions

MSCI World ex U.S. High Dividend Yield Index is based on the MSCI World ex U.S. Index, its parent index, and includes large- and mid-cap stocks across 22 of 23 Developed Markets countries. The index is designed to reflect the performance of equities in the parent index (excluding REITs) with higher dividend income and quality characteristics than average dividend yields that are both sustainable and persistent. The index also applies quality screens and reviews 12-month past performance to omit stocks with potentially deteriorating fundamentals that could force them to cut or reduce dividends.

MSCI World ex U.S. Index captures large- and mid-cap representation across 22 of 23 Developed Markets countries—excluding the United States. The index covers approximately 85% of the free float-adjusted market capitalization in each country.

Indexes are unmanaged and cannot be invested in directly.

Beta measures a portfolio’s volatility relative to the market. A Beta greater than 1.00 suggests the portfolio has historically been more volatile than the market as measured by the fund’s benchmark. A Beta less than 1.00 suggests the portfolio has historically had less volatility relative to the market.

Correlation is the degree to which one variable (here, the fund’s returns) fluctuates relative to another (the returns of the fund’s benchmark). Correlation ranges from 1.00, when two variables move identically in the same direction, to -1.00, when two variables move identically in the opposite direction.

Median 3 Year Average Payout Ratio is the proportion of earnings paid out as dividends to shareholders, typically expressed as a percentage.

Standard Deviation is a historical measure of the variability of returns relative to the average annual return. A higher number indicates higher overall volatility.

Up Capture Ratio/Down Capture Ratio is a measure of how well a manager was able to replicate or improve on periods of positive benchmark returns and how badly the manager was affected by periods of negative benchmark returns. The up-market capture ratio is a measure of a manager’s performance in up markets relative to the index during the same period. For example, a ratio value of 115 indicates that the manager has outperformed the market index by 15% in periods when the index has risen. The down-market capture ratio is the direct opposite of the up-market capture ratio, gauging performance of the manager relative to the index in down markets. A ratio value of 80 would indicate the manager had declined on 80% as much as the declining overall market, indicating relative outperformance.

Weighted Average Dividend Yield is a weighted average of the dividends of all the stocks in a portfolio.

Weighted Median Market Cap is the calculation representing the median market capitalization of the stocks in the portfolio, weighted by the amount of each stock.

Weighted Median P/E (NTM—Next 12 Months) is a ratio comparing share price to earnings per share using estimated data for the next 12 months.

Weighted Median Price/Book is a ratio comparing share price to book value or assets minus liabilities.

Weighted Average EPS Growth Next 5 Years is the weighted average annual growth rate of fiscal year earnings per share for the next five years for a given corporation.

Ratings and Rating Agencies

Lipper Categories: Data Source: Lipper, A Reuters Company. Copyright 2020© Reuters. All rights reserved. Any copying, republication or redistribution of Lipper content, including by caching, framing or similar means, is expressly prohibited without the prior written consent of Lipper. Lipper shall not be liable for any errors or delays in the content, or for any actions taken in reliance thereon.

Morningstar Category identifies funds based on their actual investment styles as measured by their underlying portfolio holdings over the past three years. If the fund is less than three years old, the category is based on the life of the fund. ©2020 Morningstar, Inc. All Rights Reserved. The information contained herein: (1) is proprietary to Morningstar; (2) may not be copied or distributed; and (3) is not warranted to be accurate, complete or timely. Neither Morningstar nor its content providers are responsible for any damages or losses arising from any use of this information. Past performance is no guarantee of future results.

This must be preceded or accompanied by a prospectus.